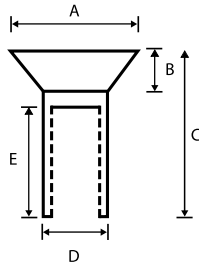


## Countersunk Barrel Nut - A2 Stainless Steel



### Dimensions (mm)

SIZE	M4	M5	M6	M8	M10
	12mm	16mm	16mm	20mm	25mm
<b>A</b>	8.0	10.0	12.0	16.0	20.0
<b>B</b>	2.1	2.6	3.0	4.0	4.75
<b>C</b>	12.0	16.0	16.0	20.0	25.0
<b>D</b>	5.3	6.35	8.0	10.0	12.5
<b>E</b>	6.0	6.0	7.0	10.0	14.0

LENGTH	DRIVER SIZE			
	12mm	16mm	20mm	25mm
<b>M4</b>	RTCBN 0412			<b>T20</b>
<b>M5</b>		RTCBN 0516		<b>T25</b>
<b>M6</b>		RTCBN 0616		<b>T30</b>
<b>M8</b>			RTCBN 0820	<b>T40</b>
<b>M10</b>				RTCBN 1025 <b>T45</b>

### Material and Finish

**Material:** A2 Stainless Steel  
**Heat Treatment:** None  
**Finish:** Self Colour

### Pack Size & Pack Weight

LENGTH	DRIVER SIZE			
	12mm	16mm	20mm	25mm
<b>M4</b>	Box 9 146g			<b>T20</b>
<b>M5</b>		Box 12 254g		<b>T25</b>
<b>M6</b>		Box 18 585g		<b>T30</b>
<b>M8</b>			Box 22 868g	<b>T40</b>
<b>M10</b>				Box 30 1,851g <b>T45</b>

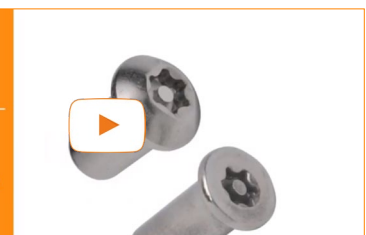
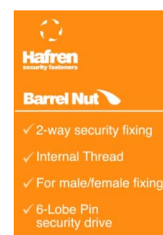
\*All parts packed in 100pcs  
 - Please see reverse for pack dimension guide

### Additional Information

**Installation:** Uses 6-Lobe Pin Tooling

**See Video:** 

**Removal:** 2-Way Permanent Fixing



Every effort has been made to ensure the accuracy of information provided in this datasheet. Hafren Fasteners cannot warrant the information however, expressly or implied, and any liability arising from it is expressly excluded. Customers must satisfy themselves as to the suitability of products and the technical information relating to them, and it is recommended that you conduct your own tests to establish suitability. All sizes shown are in mm without min and max tolerances and are guide sizes. Hafren Fasteners reserve the right to change/alter sizes without notice. This does not effect your statutory rights.